

Attachment H

[View Loss Study](#)

ATTACHMENT A – Consolidated View Loss Study

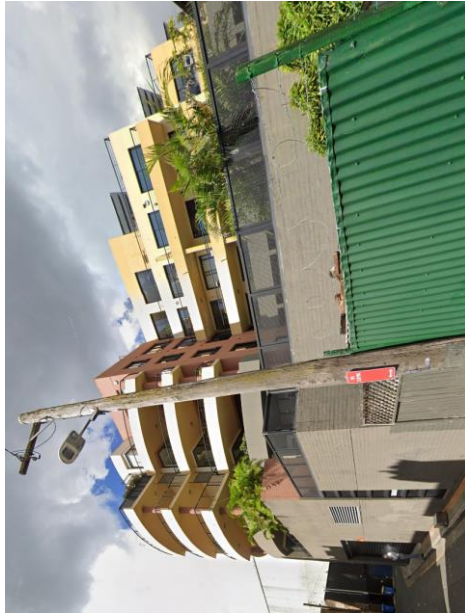
200 Campbell Street, Darlinghurst

Description

Land Use: Residential apartments

Stories: Approximately seven stories, including ground level

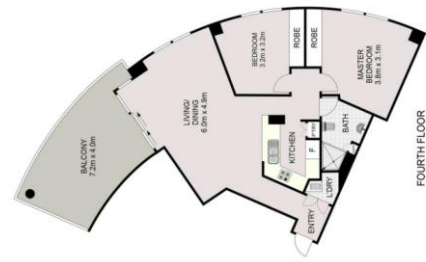
Impacted Apartments: Apartments with a northerly and north-west aspect and a communal roof terrace. Number of apartments unknown.



Source: Google Street view



Photomontage positions
Source: Virtual Ideas



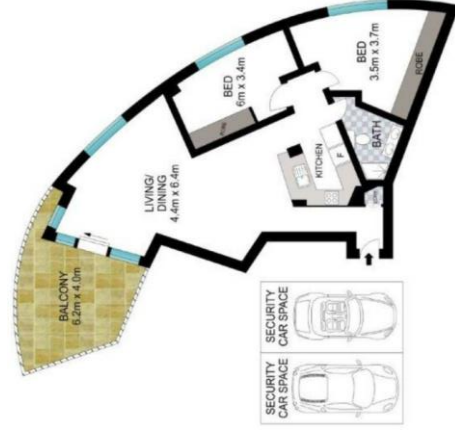
Level 4 (apartment 402)

Source: realestate.com.au



Level Five

Level 5 (apartment 501)



Level 6 (apartment 602)

Photomontages

Level 4



Existing



Proposed scheme

Level 5

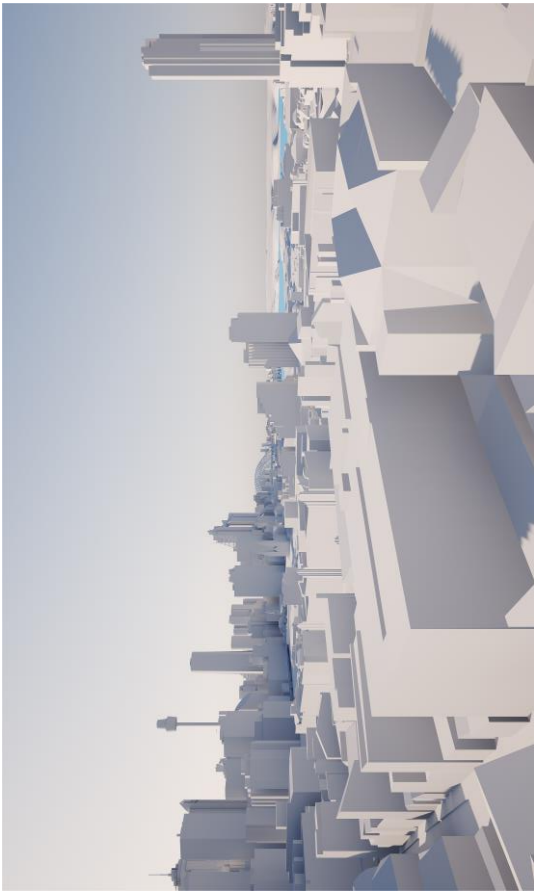


Existing



Proposed scheme

Level 6

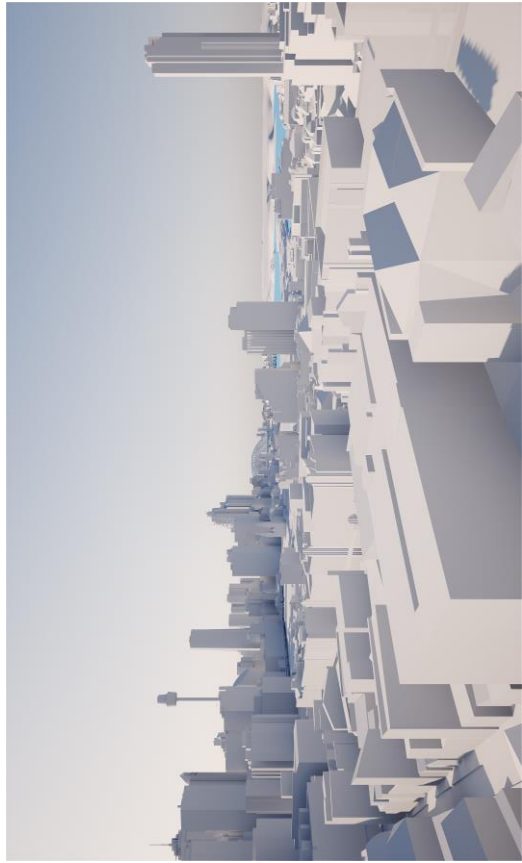


Existing



Proposed scheme

Level 7



Existing



Proposed scheme

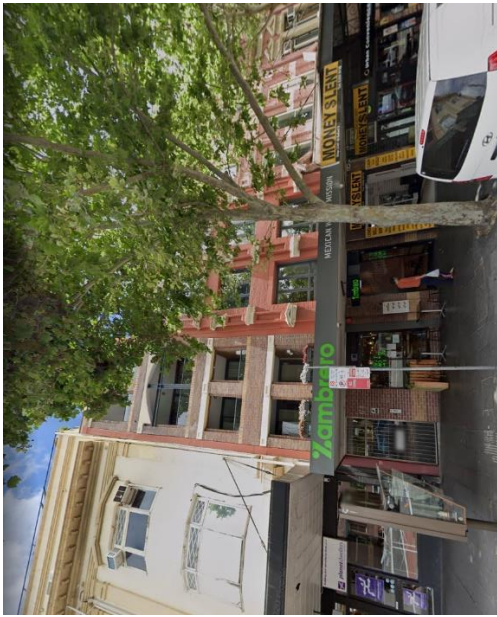
107-111 Oxford Street, Darlinghurst

Description

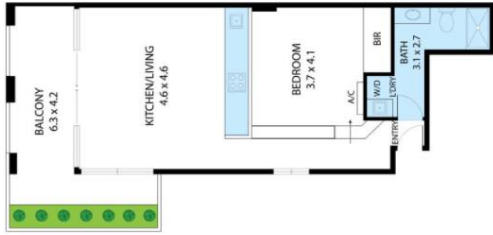
Land Use: Residential apartments and ground level non-residential uses

Stories: Approximately five stories, including ground level

Impacted Apartments: Apartments with a northerly aspect, limited to the upper two levels and a communal roof terrace. Number of apartments unknown.



Source: Google Street view



Example Level 5 apartment layout

Source: Domain



Photomontage positions

Source: Virtual Ideas

Photomontages



Existing



Proposed scheme

130-132 Oxford Street, Darlinghurst

Description

Land Use: Commercial offices and ground level non-residential use

Stories: Approximately three stories, including ground level

Impacted Areas: Communal roof terrace.

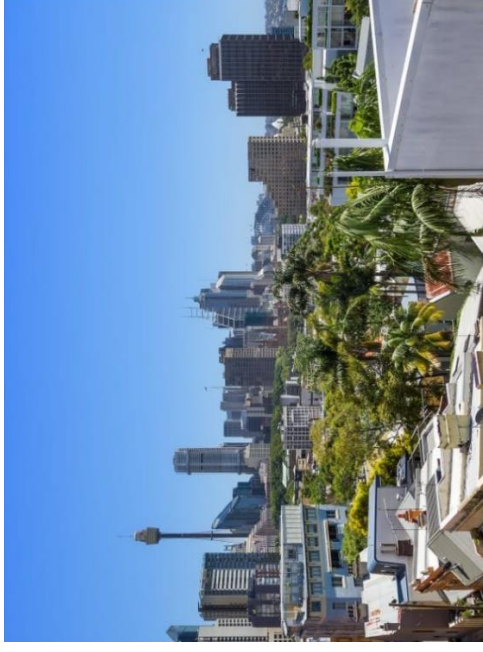


Source: Google Street view



View to the South

Source: Real Commercial



View to the North-west

Source: Real Commercial

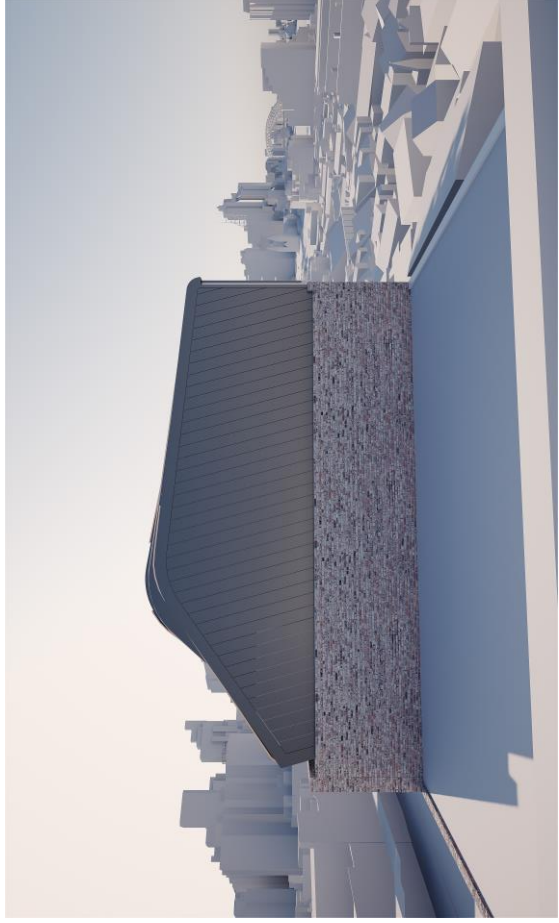


Photomontage positions Source: Virtual Ideas

Photomontages



Existing



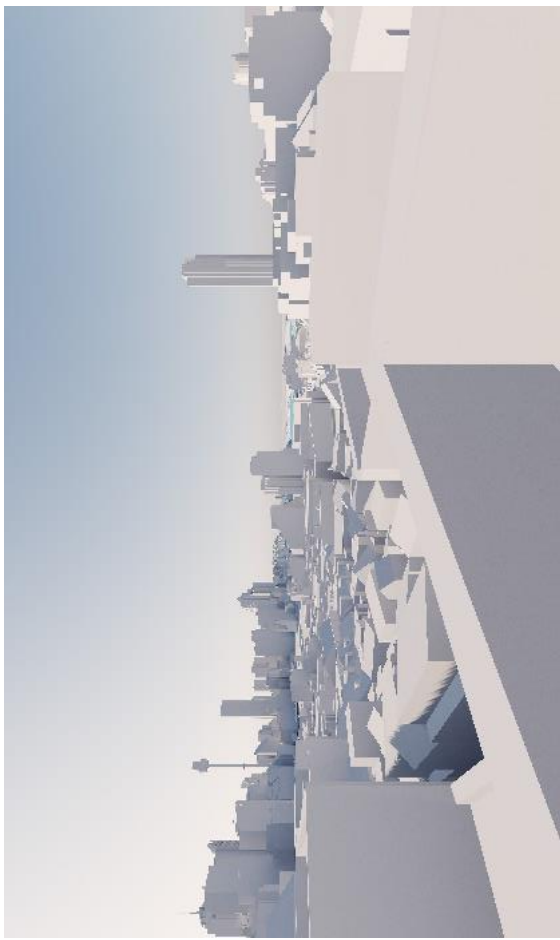
Proposed scheme



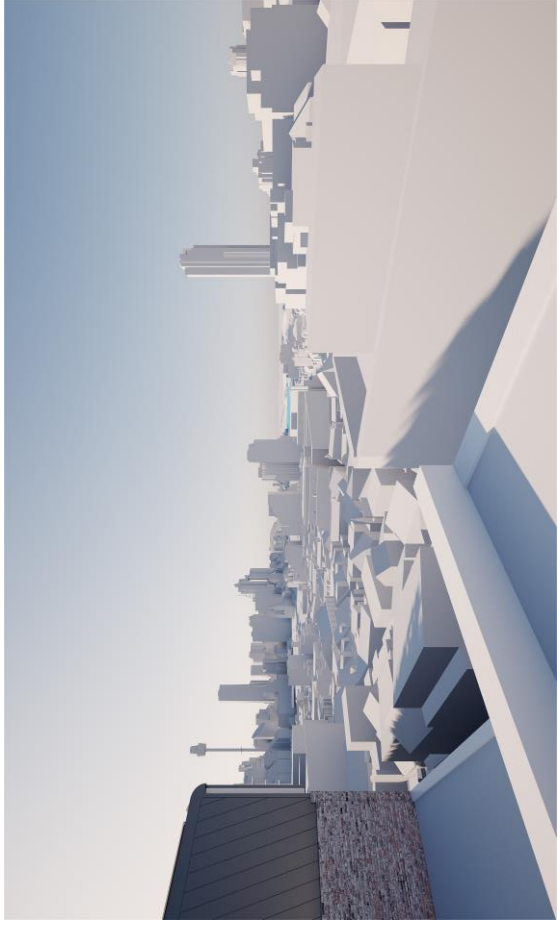
Existing



Proposed scheme



Existing



Proposed scheme

302 Crown Street, Darlinghurst

Description

Land Use: Residential apartments and ground level non-residential use

Stories: Eight stories, including ground level

Impacted Areas: North facing apartments and a communal roof terrace. Number of apartments unknown.

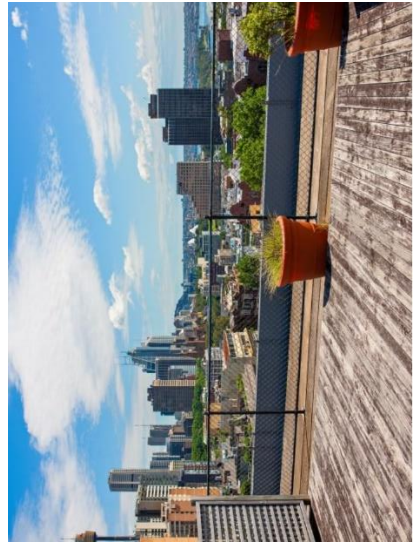


Source: Google Street view



Photomontage positions

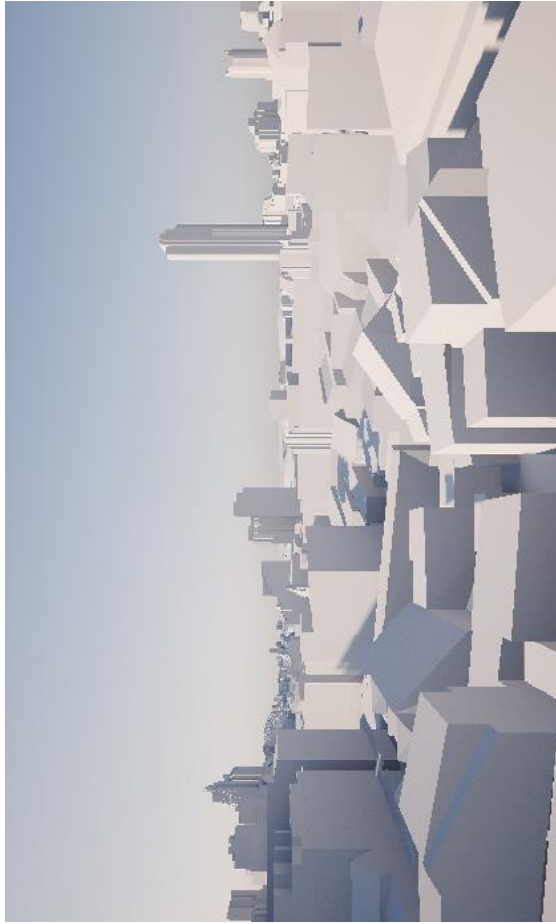
Source: Virtual Ideas



Communal rooftop looking north Source: Domain

Photomontages

Level 6



Existing



Proposed scheme

Photomontages

Level 7



Existing



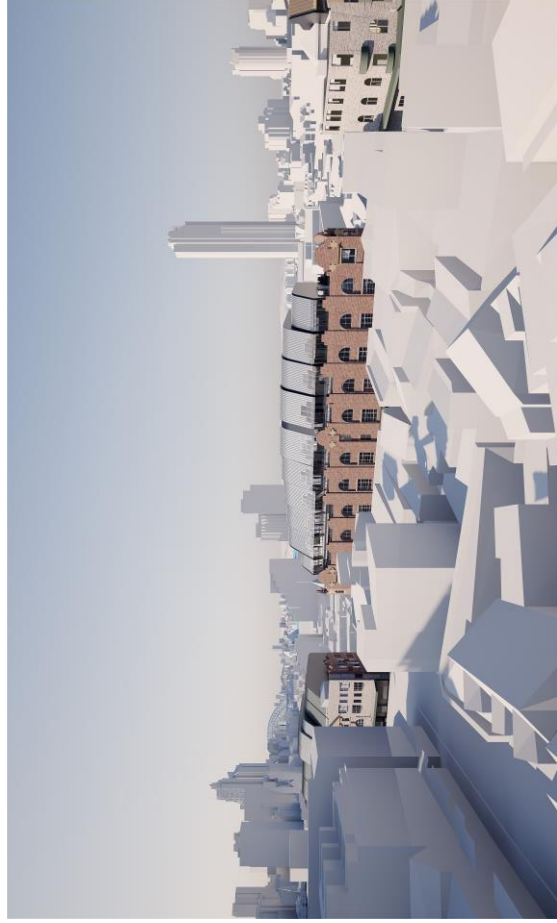
Proposed scheme

Photomontages

Level 8



Existing



Proposed scheme

80 Oxford Street, Darlinghurst

Description

Land Use: Residential studios, ground level and basement retail/non-residential use

Stories: Approximately three stories, including ground level

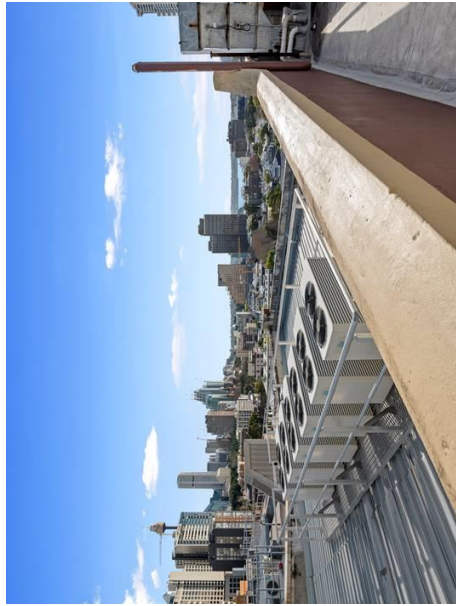
Impacted Areas: Communal roof terrace.



Source: Google Street view



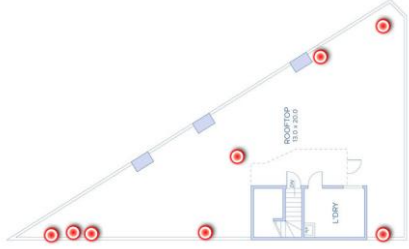
View to the North
Source: City of Sydney



View to the North
Source: City of Sydney

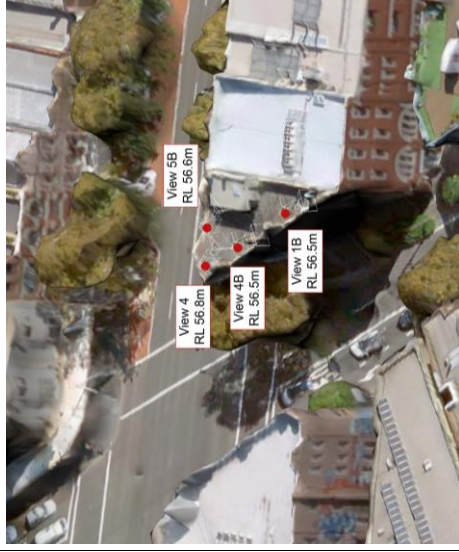


View to the North-west
Source: City of Sydney



Rooftop Floorplan

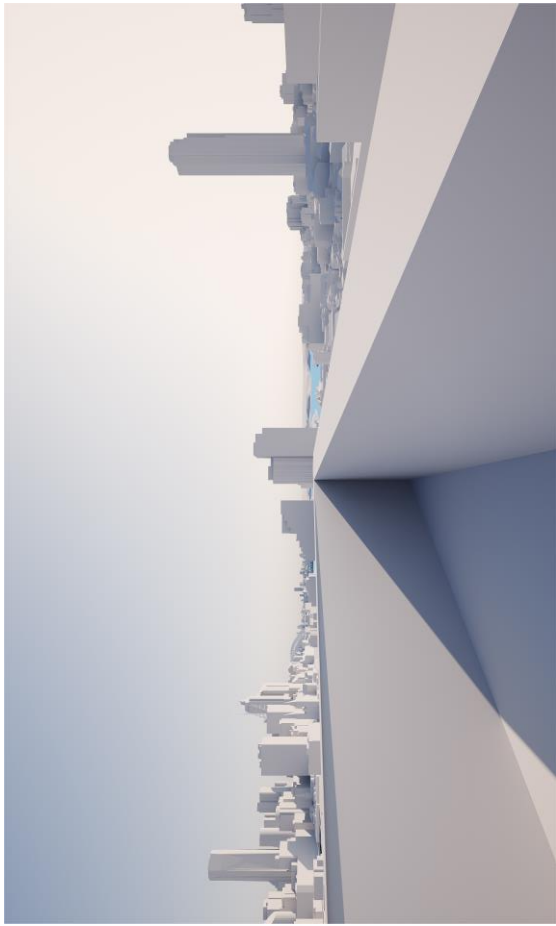
Source: Open2view.com



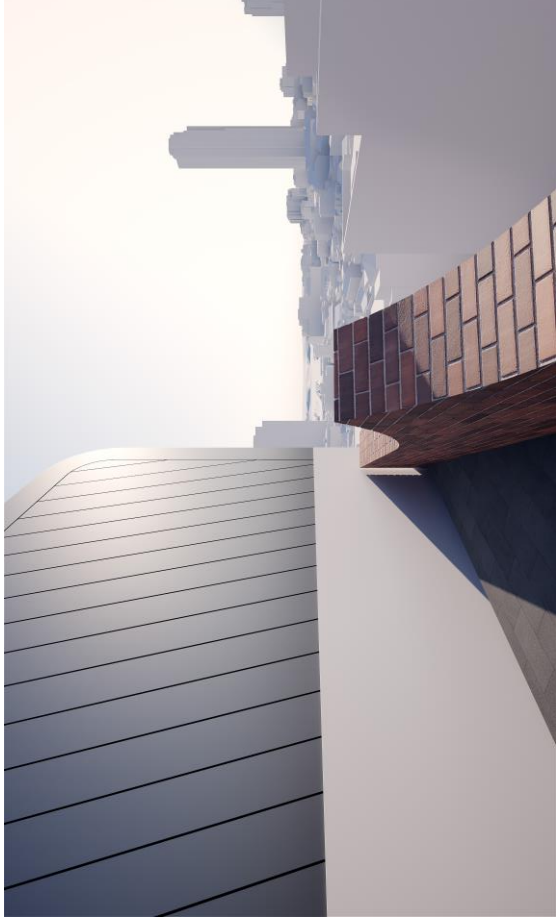
Photomontage positions

Source: Virtual Ideas

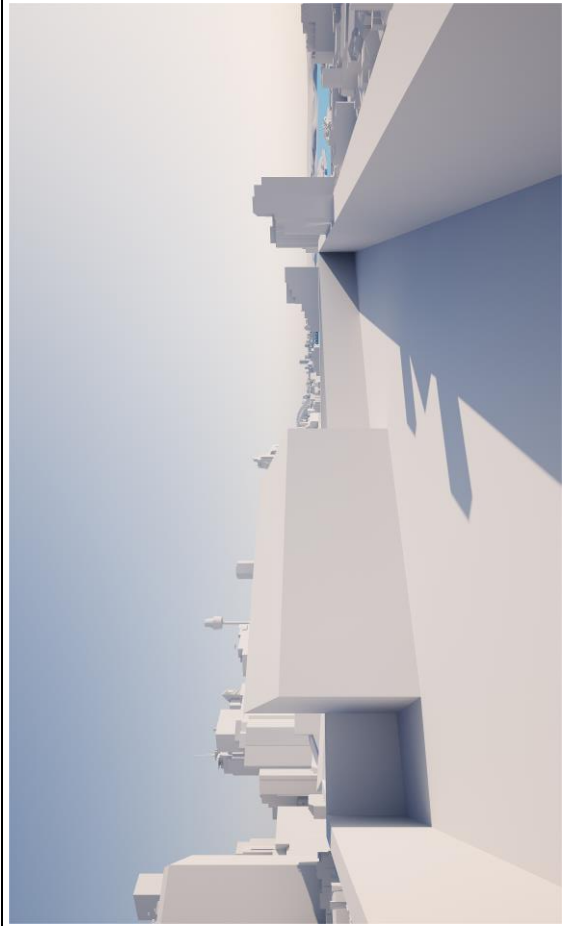
Photomontages



Existing



Proposed scheme

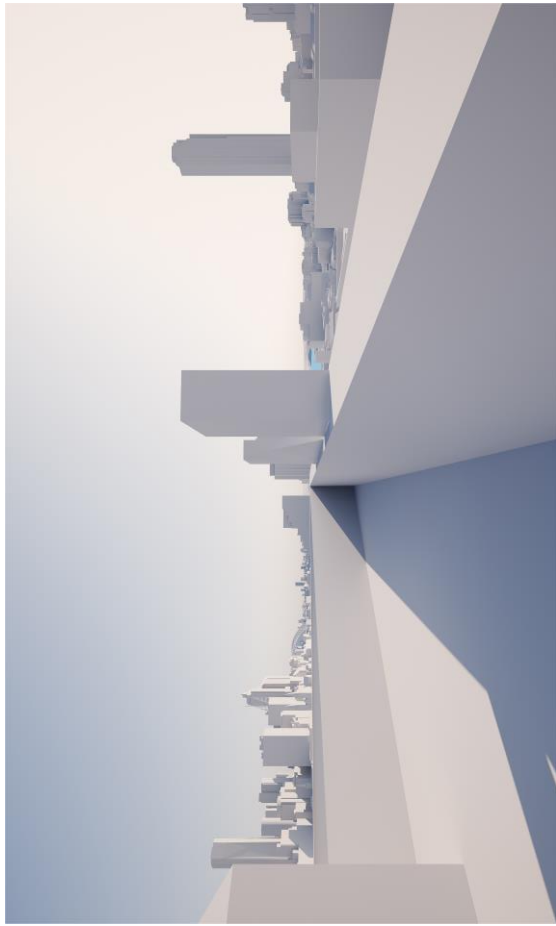


Existing



Proposed scheme

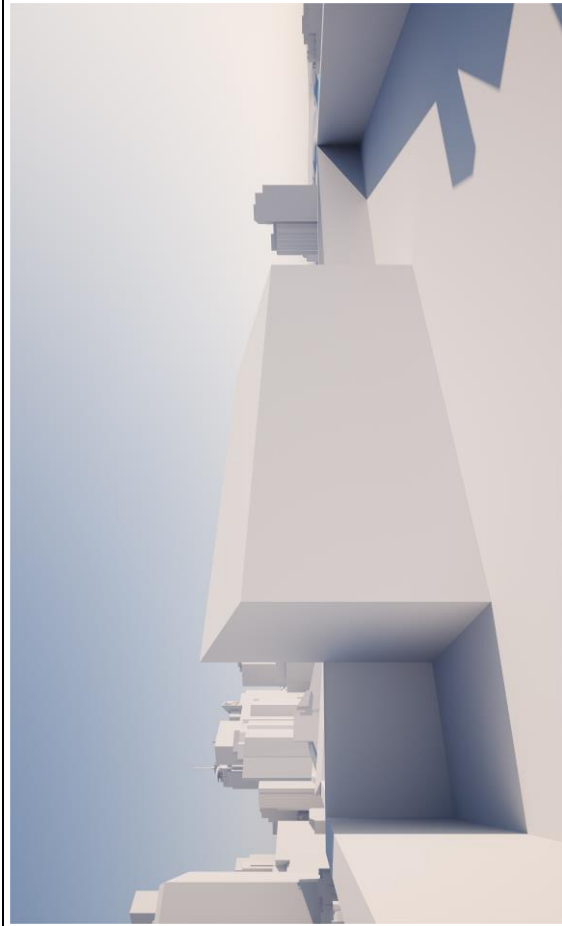
Photomontages



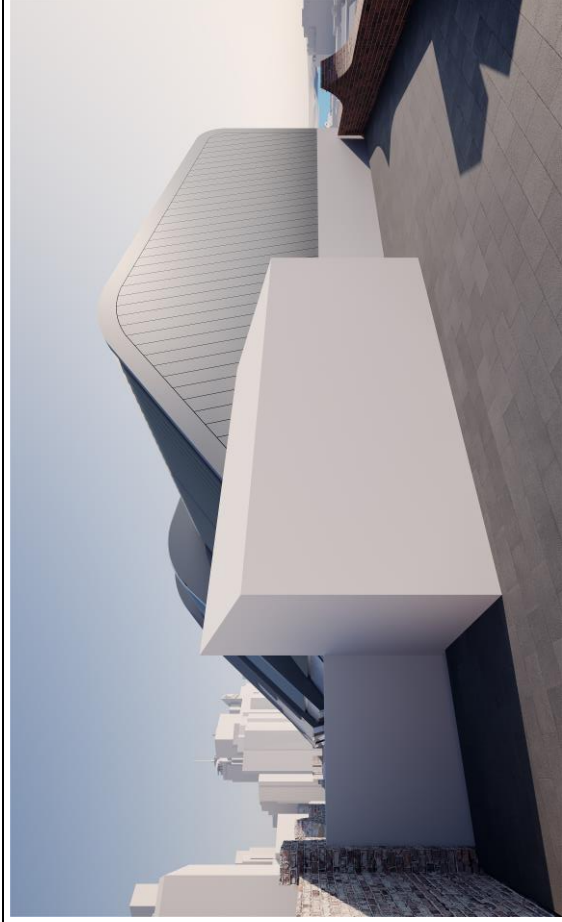
Existing



Proposed scheme



Existing



Proposed scheme